

Call for Information and Nominations (Call) and Notice of Intent (NOI)

- Published the Call and NOI to prepare an environmental assessment (EA) for tracts within the Massachusetts Call area on February 6, 2012
- 45-day comment period closes on March 22, 2012
- Submit comments by email or regular mail (addresses given at end of presentation)

What is a Call?

- The Call is a request for information for BOEM to consider in the planning, analysis, and decision-making process for offshore wind development
- It is *not* a decision to lease
- It is an early step in the first of four stages in the process of authorizing offshore commercial wind development

Massachusetts Request for Interest

- Request for Interest (RFI) was published in December 2010 for an area about twice the size of the Call Area
- At February 2011 stakeholders meetings, commercial fishing interests and others communicated that non-government entities had not been engaged early on the RFI
- MA Executive Office of Energy and Environmental Affairs established two bodies to facilitate non-governmental consultation:
 - Fisheries Working Group
 - Habitat Working Group

Massachusetts Request for Interest

- BOEM met with these working groups and extended RFI comment period
- In May 2011, BOEM excluded the eastern half of the RFI area from further consideration on recommendations of commercial fishing interests and others
- Received 247 comments and 11 expressions of industry interest

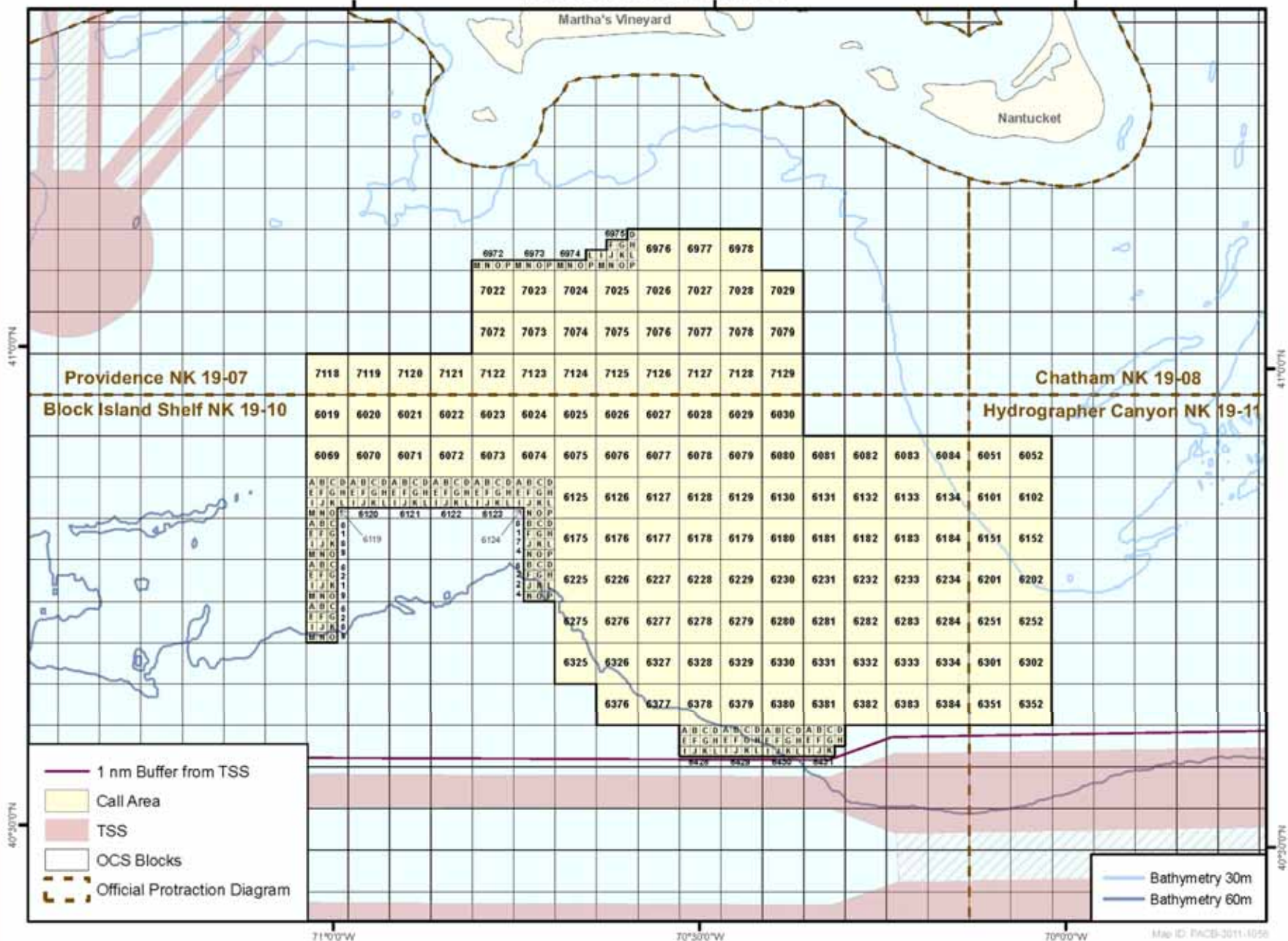
Massachusetts Call

- February 6 Call is the second planning notice issued for an area off Massachusetts
- BOEM developed the Call area in consultation with the Massachusetts Intergovernmental Task Force
- Solicits further comment on the area remaining for consideration

Massachusetts Call

- Seeks industry nominations and provides companies that previously expressed interest an opportunity to revisit nominations
- BOEM will complete Area Identification (establishment of a Wind Energy Area) after considering information received in response to the Call and NOI and consulting further with the task force

Massachusetts Call Area



NOI

- The Wind Energy Area will form the basis for the proposed action to be analyzed in BOEM's EA
- BOEM will formulate and analyze reasonable alternatives to the proposed action (e.g., mitigations, areal exclusions) in the EA
- BOEM also will complete consultations required by other laws

Submitting Comments in Response to the Call and NOI

- The NOI requests interested and affected parties to identify:
 - Issues and alternatives to be considered in the EA
 - Potential mitigation measures
 - Sources of information relevant to the analysis

Comments Due March 22

- The Call and NOI are available online at:
www.boem.gov/offshore/RenewableEnergy/StateActivities-Massachusetts.htm
- You may submit comments to www.regulations.gov. In the entry entitled “Enter Keyword or ID,” enter BOEM 2011-0097. Then click “search” and follow further instructions
- You may send comments by regular mail or hand delivered to:
Program Manager
Office of Renewable Energy Programs
Bureau of Ocean Energy Management
381 Elden Street, HM 1328
Herndon, Virginia 20170

Stage 1: Planning and Analysis

- Engage stakeholders and public
- Intergovernmental Task Force with affected federal, state, local, and tribal government officials (consult)
- **Publish Call and NOI**
- Consider information received and announce Area Identification (Wind Energy Area)
- Conduct environmental compliance review under the National Environmental Policy Act (NEPA)
- Complete consultations required by other laws (e.g., Endangered Species Act)

Stage 2: Leasing

- Offshore wind leases may be issued through a competitive or noncompetitive process
- Process to be used for Call area depends on number and location of qualified nominations received
- Any lease that is issued will convey to the lessee **only** the right to prepare and submit plans required to proceed to the next stages—site assessment and commercial development
- Lessee must receive BOEM's approval of each plan before conducting site assessment or construction and operations

Stage 3: Site Assessment & Characterization

- The lessee will conduct surveys (e.g., geological & geophysical, biological) on the leasehold (**site characterization**)
- If the lessee intends to install a bottom-founded data collection facility (e.g., meteorological mast or buoy), it must submit a Site Assessment Plan (SAP) for review and approval by BOEM (**site assessment**)
- BOEM conducts environmental and technical reviews of the lessee's SAP

Stage 3: Site Assessment & Characterization

- The lessee has a site assessment term of up to 5 years to decide whether to proceed to the next stage—commercial development
- If the lessee decides to proceed to commercial development, it must submit a Construction and Operations Plan (COP) to BOEM for review and approval

Stage 4: Commercial Development

- The lessee's COP describes:
 - Overall site investigation results
 - Offshore and onshore support
 - Any proposed mitigation and monitoring and lease stipulation compliance
 - Design, fabrication, installation, and operations concepts
 - Decommissioning and site clearance concepts
- BOEM prepares an environmental impact statement (EIS) and conducts other necessary environmental and technical reviews and consultations

Stage 4: Commercial Development

- Lessee must prepare a Navigational Risk Assessment
- If BOEM approves the COP, the lessee will have a 25-year term in which to construct facilities and generate electricity
- After 25 years, lease expiration occurs and decommissioning is required unless a renewal is granted

Opportunity for Public Comment

- All four stages provide for stakeholder engagement and public comment
 - Stakeholder meetings
 - Intergovernmental task force meetings:
public Q&A sessions
 - NOI to prepare an EA or EIS
 - Scoping meetings for EISs
 - Hearings and comment periods for draft EISs